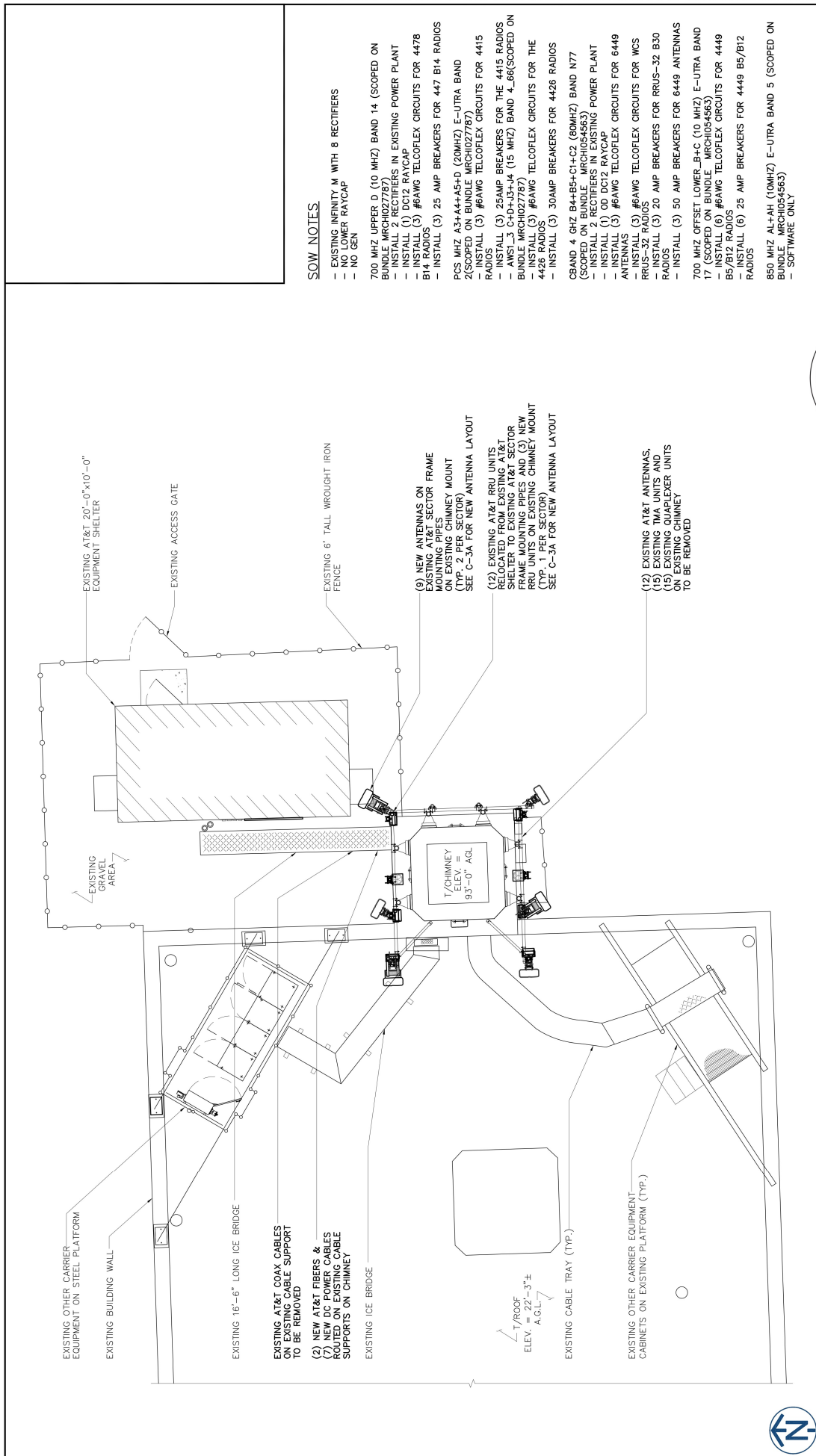


DocuSign Envelope ID: 75812679-53D7-4EC4-9739-9843F4C00071



SOW NOTES

- EXISTING INFINITY M WITH 8 RECTIFIERS
- NO POWER RAYCAP
- NO GEN
- 700 MHZ UPPER D (10 MHZ) BAND 14 (SCOPED ON BUNDLE MRCH027787)
- INSTALL 2 RECTIFIERS IN EXISTING POWER PLANT
- INSTALL (1) DC12 RAYCAP
- INSTALL (5) #6AWG TELCOFLEX CIRCUITS FOR 4478 B5/B12 RADIOS
- INSTALL (5) 25 AMP BREAKERS FOR 447 B14 RADIOS
- PCS MHZ A3+A4+A5+D (20MHZ) E-ULTRA BAND 2(SCOPED ON BUNDLE MRCH027787)
- INSTALL (3) #6AWG TELCOFLEX CIRCUITS FOR 4415 RADIOS
- INSTALL (3) 25AMP BREAKERS FOR THE 4415 RADIOS
- INSTALL (1) DC12 RAYCAP
- 700 MHZ OFFSET LOWER_B+C (10 MHZ) E-ULTRA BAND 17 (SCOPED ON BUNDLE MRCH054563)
- INSTALL (6) #6AWG TELCOFLEX CIRCUITS FOR 4449 B5/B12 RADIOS
- INSTALL (6) 25 AMP BREAKERS FOR 4449 B5/B12 RADIOS
- 850 MHZ AL+AH (10MHZ) E-ULTRA BAND 5 (SCOPED ON BUNDLE MRCH054563)
- SOFTWARE ONLY

(9) NEW ANTENNAS ON EXISTING AT&T SECTOR FRAME ON EXISTING CHIMNEY MOUNT (TYP. 2 PER SECTOR) SEE C-3A FOR NEW ANTENNA LAYOUT

(12) EXISTING AT&T RRU UNITS RELOCATED FROM EXISTING AT&T SECTOR FRAME TO NEW RRU UNITS ON EXISTING CHIMNEY MOUNT (TYP. 1 PER SECTOR) SEE C-3A FOR NEW ANTENNA LAYOUT

(15) EXISTING TMA UNITS AND EXISTING CARPENTER UNITS ON EXISTING CHIMNEY TO BE REMOVED

ENLARGED SITE PLAN

Fullerton
DESIGN DEVELOP CONSTRUCT
1100 E. WOODFIELD ROAD, SUITE 500
SCHAUMBURG, ILLINOIS 60173
DESIGN FIRM NO. 184.008202-0006
www.fullerton-us.com

MasTec
Network Solutions
1855 E. IRVING PARK RD.
TASCALOA, IL 60143
TEL: (866) 501-8586

AT&T
930 NATIONAL PARKWAY
SCHAUMBURG, IL 60173

IL1262
10094809
SCHUBERT SCHOOL
2727 N. LONG AVE.
CHICAGO, IL 60639

SCALE: AS SHOWN APP'D BY: ME

REV	DATE	BY	CHK	DESCRIPTION
3	3/19/24			CPS COMMENTS LA, DZ
0	2/14/24			FINAL LA, DZ
B	2/12/24			REVISION LA, DZ
A	2/8/24			90% REVIEW LA, DZ
#				REVISION EXTRA CHK

DATE SUBMITTED: 2/13/2024

STATE OF ILLINOIS

ABRAHAM J. ROKACH
081-004073
Ex. 11/30/2024

0 2' 4' 8' 12' SCALE: 1/8" = 1'-0"

DRAWING NO. C-2

THIS DRAWING IS THE PROPERTY OF FULLERTON ENGINEERING CONSULTANTS, INC. IT IS FOR THE EXCLUSIVE USE OF THIS PROJECT. ANY RE-USE OF THIS DRAWING WITHOUT THE EXPRESSED WRITTEN CONSENT OF FULLERTON ENGINEERING CONSULTANTS, INC. IS PROHIBITED.

PROJECT# 2022.00790034

DocuSign Envelope ID: 75812670-53D7-4EC4-9739-9843F4C00071

CHIMNEY INSPECTION REPORT NOTES:

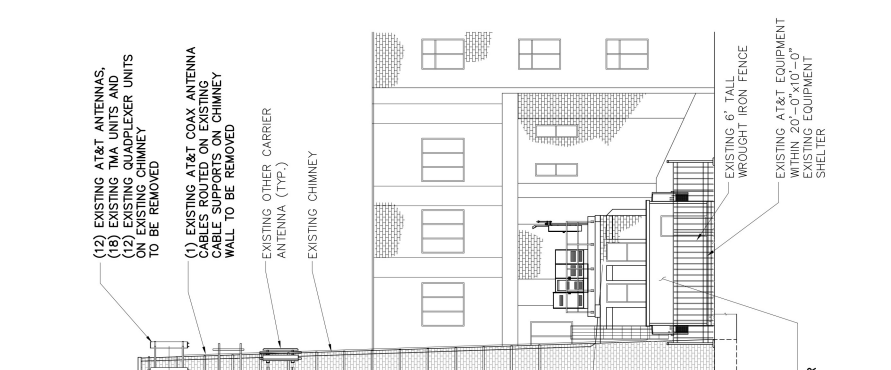
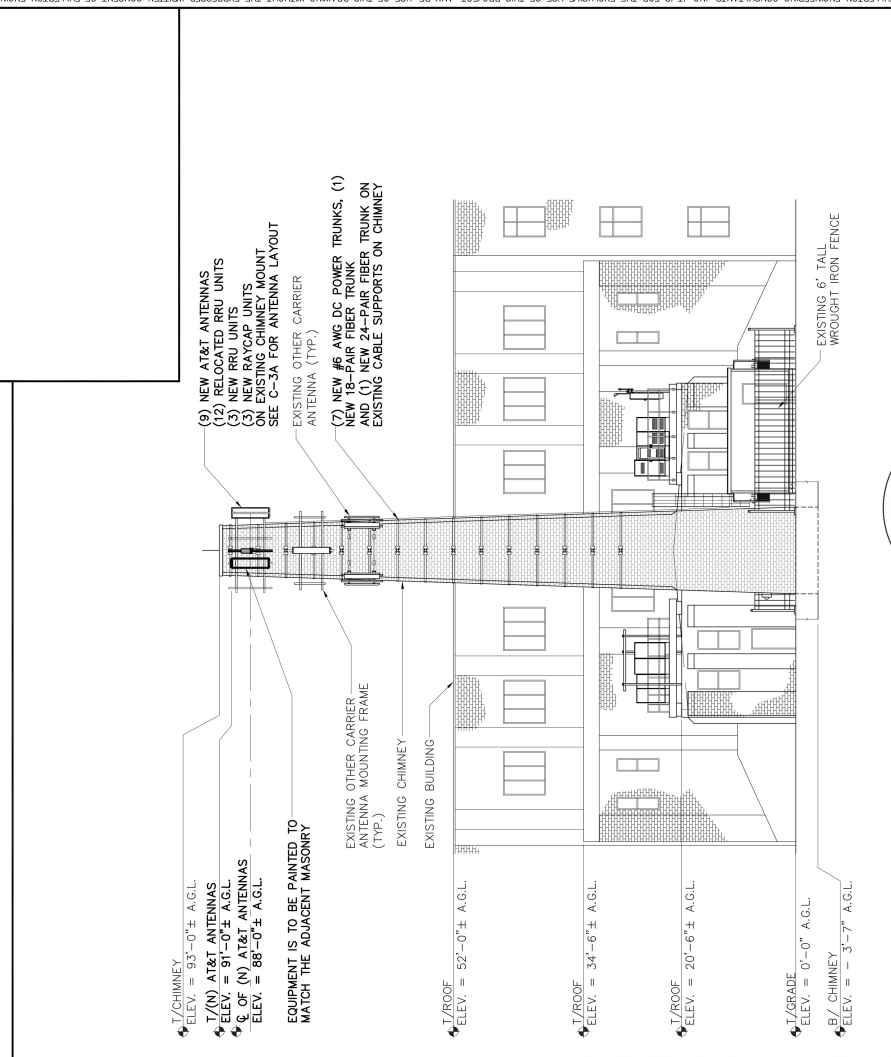
- CONTRACTOR TO REFER TO "INSPECTION REPORT FOR 96'-7" BRICK CHIMNEY, 2727 N. LONG AVE, CHICAGO, IL", DATED SEPTEMBER 27TH, 2023, PREPARED BY BEDNASH CONSULTING, INC.
- INSPECTION REPORT FOR 96'-7" BRICK CHIMNEY, 2727 N. LONG AVE, CHICAGO, IL, DATED SEPTEMBER 27TH, 2023, PREPARED BY BEDNASH CONSULTING, INC. FOR FULLERTON ENGINEERING CONSULTANTS. THE ENGINEER OF RECORD AT FULLERTON AGREES WITH THE RECOMMENDATIONS IN THIS REPORT.

CONCLUSIONS / REQUIRED MAINTENANCE ACTIONS:

NONE. (SEE SHEET GN-1 FOR ADDITIONAL NOTES)

NOTES:

- CALCULATIONS FOR THE STRUCTURE AND ANTENNA MOUNTS WERE PREPARED BY FULLERTON, AND THOSE SHOWN ON THIS DRAWING ARE FOR THE SUPPORT OF THE STRUCTURE TO SUPPORT THE NEW EQUIPMENT
- CABLES NOT SHOWN FOR CLARITY
- ALL PROPOSED ANTENNAS, EQUIPMENT, CONDUITS, AND FRAMES VISIBLE FROM THE GROUND LEVEL ARE TO BE PAINTED TO MATCH THE ADJACENT MASONRY.



NEW ELEVATION

SCALE: 3/16" = 1'-0"

DRAWING NO. **C-3**

DRAWING NAME **ELEVATION**

DATE: SUBMITTED 07/13/2024

SCALE: AS SHOWN

APP'D BY: [Signature]

DATE: 11/30/2024

SEAL: [Professional Engineer Seal]

ABRAHAM J. ROKACH
081-004073

NO.	DATE	REVISION	BY	CHK.
3	3/19/24	CPS COMMENTS	LA	DZ
0	2/14/24	FINAL	LA	DZ
B	2/12/24	REVISION	LA	DZ
A	2/8/24	90% REVIEW	LA	DZ
F		DESIGN	LA	DZ

IL 1262
10094809

SCHUBERT SCHOOL
2727 N. LONG AVE
CHICAGO, IL 60639

AT&T
930 NATIONAL PARKWAY
SCHALMERS, IL 60173

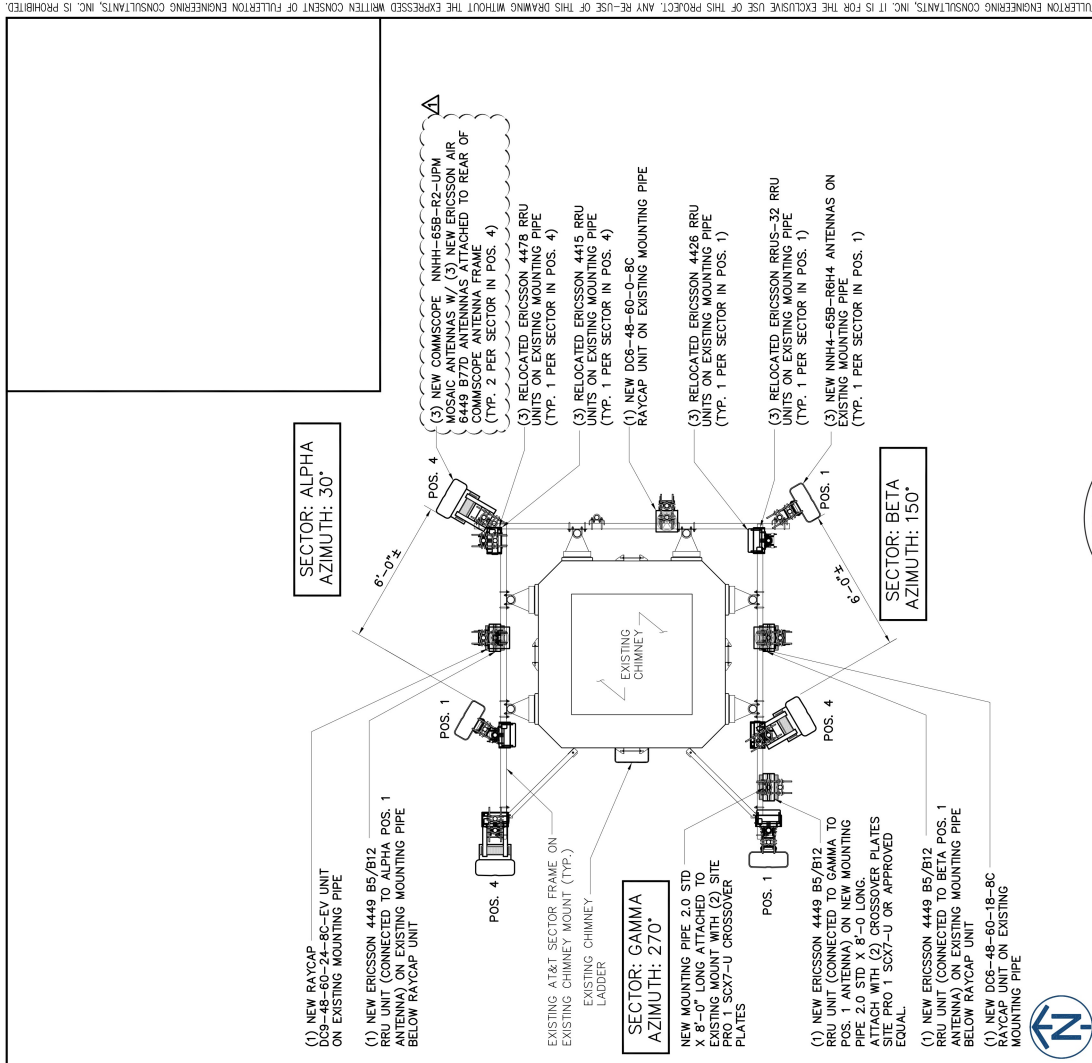
MasTec
Network Solutions
185 E. IRVING PARK RD.
TASCALOA, IL 60143
TEL: (866) 561-8556

Fullerton
DESIGN DEVELOP CONSTRUCT

1100 E. WOODFIELD ROAD, SUITE 500
SCHAMBERG, ILLINOIS 60173
DESIGN FIRM NO. 184.088202-0006
www.fullerton-us.com

EXISTING ELEVATION

SCALE: 1" = 20'-0"



SCALE: 1" = 20'-0" 0 10 20 30

SCALE: 3/16" = 1'-0" 0 1' 2' 4' 8'

DRAWING NO. 2

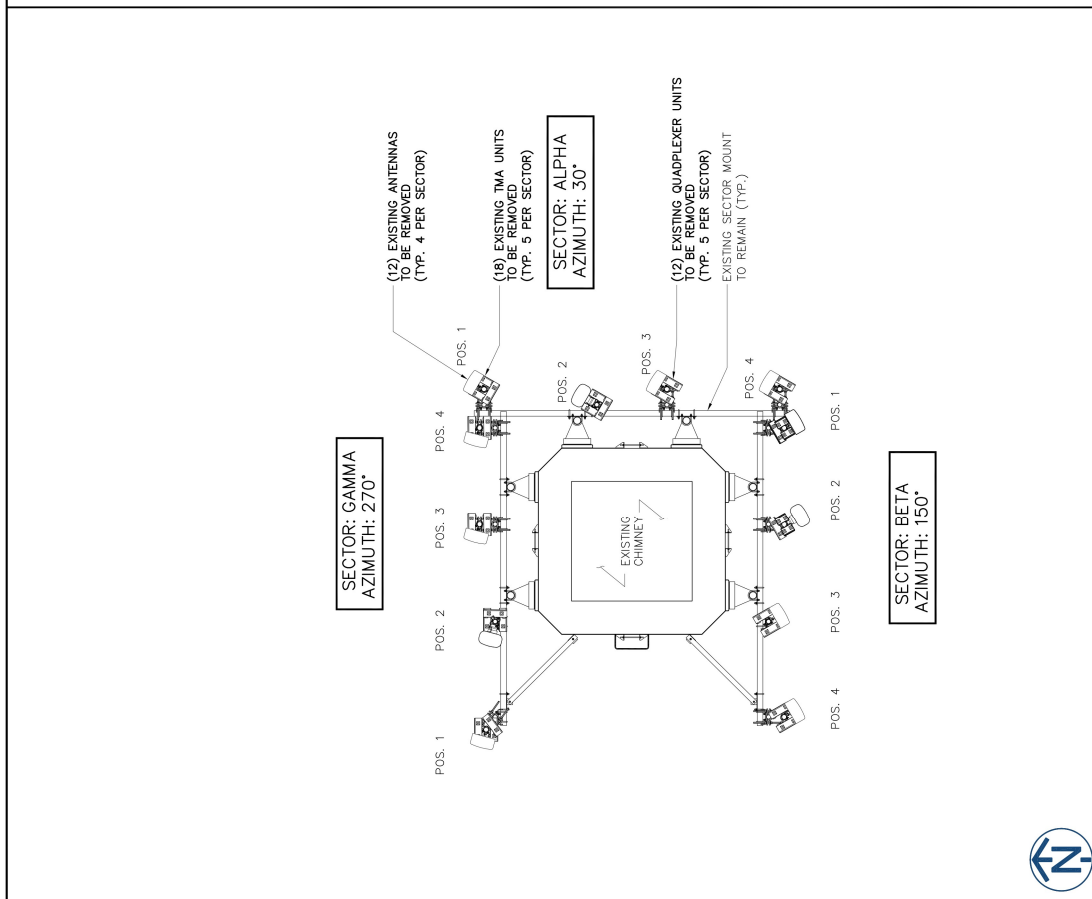
ANTENNA PLANS C-3A

DATE: SUBMITTED 07/31/2024

ABRAHAM J. ROKACH
081-004073
Ex. 11/30/2024
STATE OF ILLINOIS
Professional Engineer

REV	DATE	BY	CHK	APP'D	REV
A	7/8/24				90% REVIEW
B	7/12/24				LA 1 DZ
O	7/17/24				LA 1 DZ
Δ	3/19/24				CPS COMMENTS

IL1262
10094809
SCHUBERT SCHOOL
2727 N. LONG AVE
CHICAGO, IL 60639



SCALE: 1" = 20'-0" 0 10 20 30

SCALE: 3/16" = 1'-0" 0 1' 2' 4' 8'

DRAWING NO. 2

ANTENNA PLANS C-3A

DATE: SUBMITTED 07/31/2024

ABRAHAM J. ROKACH
081-004073
Ex. 11/30/2024
STATE OF ILLINOIS
Professional Engineer

REV	DATE	BY	CHK	APP'D	REV
A	7/8/24				90% REVIEW
B	7/12/24				LA 1 DZ
O	7/17/24				LA 1 DZ
Δ	3/19/24				CPS COMMENTS

IL1262
10094809
SCHUBERT SCHOOL
2727 N. LONG AVE
CHICAGO, IL 60639

AT&T
930 NATIONAL PARKWAY
SCHALMUR, IL 60173

MasTec
Network Solutions
185 E. IRVING PARK RD.
TASCALIA, IL 61743
TEL: (888) 561-8586

Fullerton
DESIGN DEVELOP CONSTRUCT
1100 E. WOODFIELD ROAD, SUITE 500
SCHAMBERG, ILLINOIS 60173
DESIGN FIRM NO. 184.088202-0006
www.fullerton-us.com

RF EQUIPMENT SCHEDULE

SECTOR/ POSITION	FREQUENCY BAND	ANTENNA MAKE / MODEL	RAD CENTER	AZIMUTH	ELECTRICAL TILT	MECHANICAL TILT	(QTY.) RADIO	(QTY.) TMA	(QTY.) SURGE PROTECTION	(QTY.) CABLES	CABLE LENGTH	
ALPHA	A1 LTE 700 WCS SG BAND LTE AWS5G AWS	COMSCORE NNH448R8H4	88±	30°	-	-	(1) (N) 449 B8012 (1) (R) 449 B8012 (1) (R) 449 B8012	-	-	-	-	
	A2/A3	-	-	-	-	-	-	-	-	(1) 449 B8012 (1) 18 PAIR TBER TRUNK (1) 24 PAIR TBER TRUNK	100'±	
A4	LTE 700 LTE1900SG 1900 SG BAND	(1) COMSCORE NNH448R8H4 AND (1) ERICSSON AIR449 B7D (DOSA)	88±	30°	-	-	(1) (R) 449 B814 (1) (R) 449 B814 (1) (R) 449 B814	-	(1) DC-48-46-18-4C-EV (1) DC-48-46-18-4C-EV (1) DC-48-46-18-4C-EV	-	-	
BETA	B1 LTE 700 SG 800 LTE WCS LTE AWS5G AWS	COMSCORE NNH448R8H4	88±	190°	-	-	(1) (N) 449 B8012 (1) (R) 449 B8012 (1) (R) 449 B8012	-	-	-	-	
	B2/B3	-	-	-	-	-	-	-	-	-	-	
B4	LTE 700 1900 LTE AWS5G AWS SG BAND	(1) COMSCORE NNH448R8H4 AND (1) ERICSSON AIR449 B7D (DOSA)	88±	190°	-	-	(1) (R) 449 B814 (1) (R) 449 B814 (1) (R) 449 B814	-	-	-	-	
GAMMA	C1 LTE 700 WCS SG BAND LTE AWS5G AWS	COMSCORE NNH448R8H4	88±	270°	-	-	(1) (N) 449 B8012 (1) (R) 449 B8012 (1) (R) 449 B8012	-	-	-	-	
	C1/C2	-	-	-	-	-	-	-	-	-	-	
C4	LTE 700 LTE1900SG 1900 SG BAND	(1) COMSCORE NNH448R8H4 AND (1) ERICSSON AIR449 B7D (DOSA)	88±	270°	-	-	(1) (R) 449 B814 (1) (R) 449 B814 (1) (R) 449 B814	-	-	-	-	
TOTALS										(9) ANTENNAS	(3) SPDs	(9) CABLES

EQUIPMENT DESCRIPTION TABLE

SCALE: N.T.S. 1
DRAWING NO. C-5
DRAWING NAME: EQUIPMENT DESCRIPTION TABLE

DATE: 11/30/2024
DATE SURVEY: 11/19/2024

PROJECT#: 2022.00790034

IL 1262
10094809
SCHUBERT SCHOOL
2727 N. LONG AVE
CHICAGO, IL 60639

AT&T
930 NATIONAL PARKWAY
11th FLOOR
SCHUAUBURG, IL 60173

MasTec
Network Solutions
1385 E. BRING PARK RD.
TASCARA, IL 60143
TEL: (866) 501-8556

Fullerton
DESIGN DEVELOP CONSTRUCT
1100 E. WOODFIELD ROAD, SUITE 500
SCHUAUBURG, ILLINOIS 60173
DESIGN PERM NO. 184.08202-0006
www.fullerton-us.com

3/19/24 CPS COMMENTS LA DZ
0 2/14/24 FINAL LA DZ
B 2/12/24 REVISION LA DZ
A 2/8/24 90% REVIEW LA DZ
P REVISION LA DZ
SCALE: AS SHOWN APP'D BY: MB

SEAL: CIVIL ENGINEER
ABRAHAM J. ROKACH
081-004073
Ex. 11/30/2024