

EXHIBIT "A"

SPACE PLAN AND LOCATION OF INSTALLATIONS

T-Mobile

L700 4X2/SS PROJECT

T-MOBILE Site Name

CPS WENTWORTH SCHOOL

T-MOBILE Site #

CH42418A

Site Address

6950 S SANGAMON STREET
CHICAGO, IL 60621



CALL DECKER, CHICAGO
UTILITY CONTRACTOR
FOR UNDERGROUND
UTILITIES PRIOR TO DIGGING

1-312-744-7000

SCOPE OF WORK

- THE SCOPE OF WORK CONSISTS OF:
- REPLACEMENT OF (2) EXISTING ANTENNAS W/ (5) NEW ANTENNAS
 - REMOVAL OF (1) EXISTING FPC MODULE
 - INSTALLATION OF (3) NEW HILICAMS (1) NEW AIRSCALE SM OUTDOOR AMOB W/ (1) ASIA MODULE, (2) NEW ASIA MODULES
 - REMOVAL OF (1) NEW AIRSCALE SM OUTDOOR AMOB W/ (1) NEW ASIA MODULE
 - REMOVAL OF (8) EXISTING TMAS, (1) F5MF W/ (1) FBBC & (1) FBBA
 - RELOCATION OF (2) EXISTING TMAS
 - INSTALLATION OF (2) NEW COVFS
 - INSTALLATION OF (1) NEW HYBRID CABLE

ENVIRONMENTAL NOTE

THE DRAWINGS AND SPECIFICATIONS HAVE NOT BEEN REVIEWED FOR ENVIRONMENTAL COMPLIANCE. THE CONTRACTOR SHALL BE RESPONSIBLE FOR OBTAINING ALL NECESSARY STATE AND FEDERAL REGULATIONS REQUIRE THAT ALL MATERIALS IN SCHOOLS BE ASSUMED TO BE ASBESTOS CONTAINING MATERIALS UNLESS PROVEN OTHERWISE. ANY DISTURBANCE TO ANY SURFACE BLEAD OR ASBESTOS MUST BE DONE BY LICENSED ENVIRONMENTAL COMPLIANCE MANAGER. FOR ANY WORK THAT MAY INVOLVE ENVIRONMENTAL REMEDIATION AT C-SCALE@CPS.EDU OR 773-553-3155

STATEMENT THAT COMPLIANCE WITH THE ENERGY IS NOT REQUIRED

I CERTIFY THAT TO THE BEST OF MY PROFESSIONAL KNOWLEDGE AND BELIEF, THE ATTACHED PLANS AND SPECIFICATIONS FOR THIS PROJECT DO NOT REQUIRE COMPLIANCE WITH THE ENERGY CONSERVATION OF THE MUNICIPAL CODE OF CHICAGO. PROJECT NEED NOT COMPLY BECAUSE THE EXTERIOR ENVELOPE OF A BUILDING, HVAC SYSTEMS OR ELECTRICAL LIGHTING SYSTEMS.

SIGNED: *Chad Decker* DATE: 11-12-18
ILLINOIS LICENSE NUMBER: 081-006033

PROFESSIONAL LICENSURE

I CERTIFY THAT THESE DRAWINGS WERE PREPARED UNDER MY CLOSE PERSONAL SUPERVISION AND BELIEVE COMPLY WITH THE REQUIREMENTS OF THE GOVERNING LOCAL BUILDING CODE.



SIGNED: 11/12/18
EXPIRES: 11/30/20

AERIAL MAP



GENERAL NOTES:

CONTRACTOR SHALL VERIFY ALL PLANS AND CONDITIONS ON THE PROJECT SITE AND NOTIFY THE ENGINEER IN WRITING OF ANY DISCREPANCIES WITHIN 10 BUSINESS DAYS OF THE WORK OR BE RESPONSIBLE FOR SAME. THE SEAL SERVICES ONLY THE CIVIL ENGINEERING DESIGN AND RELATED DETAILS SHOWN ON THESE PLANS. THIS SEAL DOES NOT COVER THE ELECTRICAL, MECHANICAL, STRUCTURAL DESIGN, AND RELATED DETAILS INCLUDED IN THESE PLANS.

FOR SITES WHERE A CRANE IS NECESSARY, CONTRACTOR SHALL OBTAIN ALL NECESSARY PERMITS FROM PUBLIC ROAD TO TOWER SITE PRIOR TO CONSTRUCTION. NO AERIAL FEET ABOVE GRADE, INCLUDING AERIAL UTILITY LINES, ARE ALLOWED ALONG SAID CRANE ROUTE. CONTRACTOR SHALL CONTACT THE AEE FIRM PRIOR TO CONSTRUCTION. ALL PERMITS SHALL BE OBTAINED PRIOR TO COMMENCEMENT OF WORK. ALL PERMITS ARE THE MOST RECENT SET.

CITY OF CHICAGO SUMMARY

HANDICAPPED REQUIREMENTS: FACILITY IS UNIMPAIRED AND NOT FOR HUMAN HABITATION. HANDICAP ACCESS REQUIREMENTS NOT REQUIRED. FACILITY HAS NO PLUMBING, MECHANICAL, OR ELECTRICAL SYSTEMS. REFRIGERATION NOTE: NO REFRIGERANTS ARE USED FOR COOLING THE EQUIPMENT. EXIST. STRUCTURAL CONDITION: EXISTING CONDITIONS WILL BE CHECKED FOR DEFICIENCIES. ANY DEFICIENCIES ENCOUNTERED AT THE TIME OF CONSTRUCTION SHALL BE CORRECTED. ALL PERMITS SHALL BE OBTAINED AND CONTRACTOR SHALL NOTIFY STRUCTURAL ENGINEER IMMEDIATELY.

SHEET INDEX

NO.	TITLE/DESCRIPTION
1	PROPOSED SITE ELEVATION D, RE: 10-31-18
2	PROPOSED EQUIPMENT LAYOUT, 10-31-18
3	PROPOSED SITE ELEVATION D, RE: 10-31-18
4	PROPOSED EQUIPMENT LAYOUT, 10-31-18
5	PROPOSED SITE ELEVATION D, RE: 10-31-18
6	PROPOSED EQUIPMENT LAYOUT, 10-31-18
7	PROPOSED SITE ELEVATION D, RE: 10-31-18
8	PROPOSED EQUIPMENT LAYOUT, 10-31-18
9	PROPOSED SITE ELEVATION D, RE: 10-31-18
10	PROPOSED EQUIPMENT LAYOUT, 10-31-18
11	PROPOSED SITE ELEVATION D, RE: 10-31-18
12	PROPOSED EQUIPMENT LAYOUT, 10-31-18
13	PROPOSED SITE ELEVATION D, RE: 10-31-18
14	PROPOSED EQUIPMENT LAYOUT, 10-31-18
15	PROPOSED SITE ELEVATION D, RE: 10-31-18
16	PROPOSED EQUIPMENT LAYOUT, 10-31-18
17	PROPOSED SITE ELEVATION D, RE: 10-31-18
18	PROPOSED EQUIPMENT LAYOUT, 10-31-18
19	PROPOSED SITE ELEVATION D, RE: 10-31-18
20	PROPOSED EQUIPMENT LAYOUT, 10-31-18
21	PROPOSED SITE ELEVATION D, RE: 10-31-18
22	PROPOSED EQUIPMENT LAYOUT, 10-31-18
23	PROPOSED SITE ELEVATION D, RE: 10-31-18
24	PROPOSED EQUIPMENT LAYOUT, 10-31-18
25	PROPOSED SITE ELEVATION D, RE: 10-31-18
26	PROPOSED EQUIPMENT LAYOUT, 10-31-18
27	PROPOSED SITE ELEVATION D, RE: 10-31-18
28	PROPOSED EQUIPMENT LAYOUT, 10-31-18
29	PROPOSED SITE ELEVATION D, RE: 10-31-18
30	PROPOSED EQUIPMENT LAYOUT, 10-31-18
31	PROPOSED SITE ELEVATION D, RE: 10-31-18
32	PROPOSED EQUIPMENT LAYOUT, 10-31-18
33	PROPOSED SITE ELEVATION D, RE: 10-31-18
34	PROPOSED EQUIPMENT LAYOUT, 10-31-18
35	PROPOSED SITE ELEVATION D, RE: 10-31-18
36	PROPOSED EQUIPMENT LAYOUT, 10-31-18
37	PROPOSED SITE ELEVATION D, RE: 10-31-18
38	PROPOSED EQUIPMENT LAYOUT, 10-31-18
39	PROPOSED SITE ELEVATION D, RE: 10-31-18
40	PROPOSED EQUIPMENT LAYOUT, 10-31-18
41	PROPOSED SITE ELEVATION D, RE: 10-31-18
42	PROPOSED EQUIPMENT LAYOUT, 10-31-18
43	PROPOSED SITE ELEVATION D, RE: 10-31-18
44	PROPOSED EQUIPMENT LAYOUT, 10-31-18
45	PROPOSED SITE ELEVATION D, RE: 10-31-18
46	PROPOSED EQUIPMENT LAYOUT, 10-31-18
47	PROPOSED SITE ELEVATION D, RE: 10-31-18
48	PROPOSED EQUIPMENT LAYOUT, 10-31-18
49	PROPOSED SITE ELEVATION D, RE: 10-31-18
50	PROPOSED EQUIPMENT LAYOUT, 10-31-18
51	PROPOSED SITE ELEVATION D, RE: 10-31-18
52	PROPOSED EQUIPMENT LAYOUT, 10-31-18
53	PROPOSED SITE ELEVATION D, RE: 10-31-18
54	PROPOSED EQUIPMENT LAYOUT, 10-31-18
55	PROPOSED SITE ELEVATION D, RE: 10-31-18
56	PROPOSED EQUIPMENT LAYOUT, 10-31-18
57	PROPOSED SITE ELEVATION D, RE: 10-31-18
58	PROPOSED EQUIPMENT LAYOUT, 10-31-18
59	PROPOSED SITE ELEVATION D, RE: 10-31-18
60	PROPOSED EQUIPMENT LAYOUT, 10-31-18
61	PROPOSED SITE ELEVATION D, RE: 10-31-18
62	PROPOSED EQUIPMENT LAYOUT, 10-31-18
63	PROPOSED SITE ELEVATION D, RE: 10-31-18
64	PROPOSED EQUIPMENT LAYOUT, 10-31-18
65	PROPOSED SITE ELEVATION D, RE: 10-31-18
66	PROPOSED EQUIPMENT LAYOUT, 10-31-18
67	PROPOSED SITE ELEVATION D, RE: 10-31-18
68	PROPOSED EQUIPMENT LAYOUT, 10-31-18
69	PROPOSED SITE ELEVATION D, RE: 10-31-18
70	PROPOSED EQUIPMENT LAYOUT, 10-31-18
71	PROPOSED SITE ELEVATION D, RE: 10-31-18
72	PROPOSED EQUIPMENT LAYOUT, 10-31-18
73	PROPOSED SITE ELEVATION D, RE: 10-31-18
74	PROPOSED EQUIPMENT LAYOUT, 10-31-18
75	PROPOSED SITE ELEVATION D, RE: 10-31-18
76	PROPOSED EQUIPMENT LAYOUT, 10-31-18
77	PROPOSED SITE ELEVATION D, RE: 10-31-18
78	PROPOSED EQUIPMENT LAYOUT, 10-31-18
79	PROPOSED SITE ELEVATION D, RE: 10-31-18
80	PROPOSED EQUIPMENT LAYOUT, 10-31-18
81	PROPOSED SITE ELEVATION D, RE: 10-31-18
82	PROPOSED EQUIPMENT LAYOUT, 10-31-18
83	PROPOSED SITE ELEVATION D, RE: 10-31-18
84	PROPOSED EQUIPMENT LAYOUT, 10-31-18
85	PROPOSED SITE ELEVATION D, RE: 10-31-18
86	PROPOSED EQUIPMENT LAYOUT, 10-31-18
87	PROPOSED SITE ELEVATION D, RE: 10-31-18
88	PROPOSED EQUIPMENT LAYOUT, 10-31-18
89	PROPOSED SITE ELEVATION D, RE: 10-31-18
90	PROPOSED EQUIPMENT LAYOUT, 10-31-18
91	PROPOSED SITE ELEVATION D, RE: 10-31-18
92	PROPOSED EQUIPMENT LAYOUT, 10-31-18
93	PROPOSED SITE ELEVATION D, RE: 10-31-18
94	PROPOSED EQUIPMENT LAYOUT, 10-31-18
95	PROPOSED SITE ELEVATION D, RE: 10-31-18
96	PROPOSED EQUIPMENT LAYOUT, 10-31-18
97	PROPOSED SITE ELEVATION D, RE: 10-31-18
98	PROPOSED EQUIPMENT LAYOUT, 10-31-18
99	PROPOSED SITE ELEVATION D, RE: 10-31-18
100	PROPOSED EQUIPMENT LAYOUT, 10-31-18

DRIVING DIRECTIONS

- DRIVING DIRECTIONS FROM T-MOBILE OFFICE AT 1400 OPUS PLACE, DOWNERS GROVE, IL 60515
- GO SOUTH ON I-55
 - TURN RIGHT TOWARD DOWNERS GROVE
 - TURN LEFT TOWARD DOWNERS GROVE
 - TURN RIGHT ONTO FRONTAGE RD 276 FT
 - TURN LEFT ONTO FRONTAGE RD 80.9 FT
 - TURN RIGHT AT THE 1ST CROSS STREET ONTO FRONTAGE RD 80.9 FT TO CHICAGO 53.8M
 - TURN LEFT AT THE 1ST TURN LEFT ONTO THE INTERSTATE B/E RAMP TO CHICAGO 53.8M
 - USE THE RIGHT 2 LANES TO MERGE ONTO I-55 S 12.8 M
 - TURN LEFT ONTO HWY 2.9 M
 - TURN LEFT ONTO HWY 2.9 M
 - TURN RIGHT ONTO WASHINGTON AVE 8.8 M
 - TURN LEFT ONTO WASHINGTON AVE 8.8 M
 - TURN LEFT ONTO WASHINGTON AVE 8.8 M
 - TURN LEFT ONTO WASHINGTON AVE 8.8 M
 - TURN LEFT AT THE 1ST CROSS STREET ONTO S SANGAMON ST 108 FT
- TOTAL TRAVEL ESTIMATE 28.3 MILES ABOUT 1 HOUR AND 3 MINUTES

T-Mobile
T-MOBILE
1400 OPUS PLACE
DOWNERS GROVE, IL 60515
PHONE: (773) 444-5400

LCC TELECOM SERVICES
LCC TELECOM SERVICES, LLC
1400 OPUS PLACE, SUITE 240
DOWNERS GROVE, IL 60515
MAIN: (847) 360-4633

CONCORDIA WIRELESS, INC.
CONCORDIA WIRELESS, INC.
361 RANDY ROAD
UNIT 01
CAROL STREAM, IL 60188
MAIN: (847) 981-0801

DRAWN BY: JC		CHECKED BY: GMS	
APPROVED BY: RH		APPROVED BY: GMS	
No.	Revision/Issue	Date	Initial
A	90% REVIEW	07/13/18	SK
B	REV-B	07/26/18	RE
C	FINAL	08/28/18	RE
D	CPS COMMENTS	10/01/18	RE
E	CPS COMMENTS 2	11/12/18	RE

CH42418A
CPS WENTWORTH SCHOOL
6950 S SANGAMON STREET
CHICAGO, IL 60621

TITLE SHEET

T-1
10-31-18
D, RE

PROJECT INFORMATION

SUBCONTRACTORS WORK SHALL COMPLY WITH ALL NATIONAL, STATE AND LOCAL CODES AS ADOPTED BY THE LOCAL AUTHORITY HAVING JURISDICTION OVER THE PROJECT. THE CONTRACTOR SHALL BE RESPONSIBLE FOR OBTAINING ALL NECESSARY PERMITS AND APPROVED CODES AND STANDARDS IN EFFECT ON THE DATE OF CONTRACT SIGNATURE. THE CONTRACTOR SHALL BE RESPONSIBLE FOR OBTAINING ALL NECESSARY PERMITS AND APPROVED CODES AND STANDARDS IN EFFECT ON THE DATE OF CONTRACT SIGNATURE.

APPLICANT:
T-MOBILE
1400 OPUS PLACE
DOWNERS GROVE, IL 60515
PHONE: (773) 444-5400

ENGINEERING CONTACT:
CONCORDIA WIRELESS, INC.
1400 OPUS PLACE
DOWNERS GROVE, IL 60515
PHONE: (847) 981-0801
FAX: (847) 586-0643

SITE ACQUISITION:
LCC TELECOM
1400 OPUS PLACE
DOWNERS GROVE, IL 60515
PHONE: (847) 630-2142

SITE INFORMATION:
LATITUDE: N 41° 46' 02.99" (NAD 83)
LONGITUDE: W 87° 35' 55.39" (NAD 83)
SITE TYPE: ROOFTOP
JURISDICTION: CITY OF CHICAGO
COUNTY: COOK COUNTY

RECOMMENDED PRACTICES FOR POWER AND GROUNDING

SEE DS-24. RECOMMENDED PRACTICES FOR SURFACE MOUNTED EQUIPMENT. SEE DS-25. RECOMMENDED PRACTICES FOR UNDERGROUND EQUIPMENT. SEE DS-26. RECOMMENDED PRACTICES FOR PROTECTION CODE. SEE DS-27. RECOMMENDED PRACTICES FOR PROTECTION CODE. SEE DS-28. RECOMMENDED PRACTICES FOR PROTECTION CODE. SEE DS-29. RECOMMENDED PRACTICES FOR PROTECTION CODE. SEE DS-30. RECOMMENDED PRACTICES FOR PROTECTION CODE. SEE DS-31. RECOMMENDED PRACTICES FOR PROTECTION CODE. SEE DS-32. RECOMMENDED PRACTICES FOR PROTECTION CODE. SEE DS-33. RECOMMENDED PRACTICES FOR PROTECTION CODE. SEE DS-34. RECOMMENDED PRACTICES FOR PROTECTION CODE. SEE DS-35. RECOMMENDED PRACTICES FOR PROTECTION CODE. SEE DS-36. RECOMMENDED PRACTICES FOR PROTECTION CODE. SEE DS-37. RECOMMENDED PRACTICES FOR PROTECTION CODE. SEE DS-38. RECOMMENDED PRACTICES FOR PROTECTION CODE. SEE DS-39. RECOMMENDED PRACTICES FOR PROTECTION CODE. SEE DS-40. RECOMMENDED PRACTICES FOR PROTECTION CODE. SEE DS-41. RECOMMENDED PRACTICES FOR PROTECTION CODE. SEE DS-42. RECOMMENDED PRACTICES FOR PROTECTION CODE. SEE DS-43. RECOMMENDED PRACTICES FOR PROTECTION CODE. SEE DS-44. RECOMMENDED PRACTICES FOR PROTECTION CODE. SEE DS-45. RECOMMENDED PRACTICES FOR PROTECTION CODE. SEE DS-46. RECOMMENDED PRACTICES FOR PROTECTION CODE. SEE DS-47. RECOMMENDED PRACTICES FOR PROTECTION CODE. SEE DS-48. RECOMMENDED PRACTICES FOR PROTECTION CODE. SEE DS-49. RECOMMENDED PRACTICES FOR PROTECTION CODE. SEE DS-50. RECOMMENDED PRACTICES FOR PROTECTION CODE. SEE DS-51. RECOMMENDED PRACTICES FOR PROTECTION CODE. SEE DS-52. RECOMMENDED PRACTICES FOR PROTECTION CODE. SEE DS-53. RECOMMENDED PRACTICES FOR PROTECTION CODE. SEE DS-54. RECOMMENDED PRACTICES FOR PROTECTION CODE. SEE DS-55. RECOMMENDED PRACTICES FOR PROTECTION CODE. SEE DS-56. RECOMMENDED PRACTICES FOR PROTECTION CODE. SEE DS-57. RECOMMENDED PRACTICES FOR PROTECTION CODE. SEE DS-58. RECOMMENDED PRACTICES FOR PROTECTION CODE. SEE DS-59. RECOMMENDED PRACTICES FOR PROTECTION CODE. SEE DS-60. RECOMMENDED PRACTICES FOR PROTECTION CODE. SEE DS-61. RECOMMENDED PRACTICES FOR PROTECTION CODE. SEE DS-62. RECOMMENDED PRACTICES FOR PROTECTION CODE. SEE DS-63. RECOMMENDED PRACTICES FOR PROTECTION CODE. SEE DS-64. RECOMMENDED PRACTICES FOR PROTECTION CODE. SEE DS-65. RECOMMENDED PRACTICES FOR PROTECTION CODE. SEE DS-66. RECOMMENDED PRACTICES FOR PROTECTION CODE. SEE DS-67. RECOMMENDED PRACTICES FOR PROTECTION CODE. SEE DS-68. RECOMMENDED PRACTICES FOR PROTECTION CODE. SEE DS-69. RECOMMENDED PRACTICES FOR PROTECTION CODE. SEE DS-70. RECOMMENDED PRACTICES FOR PROTECTION CODE. SEE DS-71. RECOMMENDED PRACTICES FOR PROTECTION CODE. SEE DS-72. RECOMMENDED PRACTICES FOR PROTECTION CODE. SEE DS-73. RECOMMENDED PRACTICES FOR PROTECTION CODE. SEE DS-74. RECOMMENDED PRACTICES FOR PROTECTION CODE. SEE DS-75. RECOMMENDED PRACTICES FOR PROTECTION CODE. SEE DS-76. RECOMMENDED PRACTICES FOR PROTECTION CODE. SEE DS-77. RECOMMENDED PRACTICES FOR PROTECTION CODE. SEE DS-78. RECOMMENDED PRACTICES FOR PROTECTION CODE. SEE DS-79. RECOMMENDED PRACTICES FOR PROTECTION CODE. SEE DS-80. RECOMMENDED PRACTICES FOR PROTECTION CODE. SEE DS-81. RECOMMENDED PRACTICES FOR PROTECTION CODE. SEE DS-82. RECOMMENDED PRACTICES FOR PROTECTION CODE. SEE DS-83. RECOMMENDED PRACTICES FOR PROTECTION CODE. SEE DS-84. RECOMMENDED PRACTICES FOR PROTECTION CODE. SEE DS-85. RECOMMENDED PRACTICES FOR PROTECTION CODE. SEE DS-86. RECOMMENDED PRACTICES FOR PROTECTION CODE. SEE DS-87. RECOMMENDED PRACTICES FOR PROTECTION CODE. SEE DS-88. RECOMMENDED PRACTICES FOR PROTECTION CODE. SEE DS-89. RECOMMENDED PRACTICES FOR PROTECTION CODE. SEE DS-90. RECOMMENDED PRACTICES FOR PROTECTION CODE. SEE DS-91. RECOMMENDED PRACTICES FOR PROTECTION CODE. SEE DS-92. RECOMMENDED PRACTICES FOR PROTECTION CODE. SEE DS-93. RECOMMENDED PRACTICES FOR PROTECTION CODE. SEE DS-94. RECOMMENDED PRACTICES FOR PROTECTION CODE. SEE DS-95. RECOMMENDED PRACTICES FOR PROTECTION CODE. SEE DS-96. RECOMMENDED PRACTICES FOR PROTECTION CODE. SEE DS-97. RECOMMENDED PRACTICES FOR PROTECTION CODE. SEE DS-98. RECOMMENDED PRACTICES FOR PROTECTION CODE. SEE DS-99. RECOMMENDED PRACTICES FOR PROTECTION CODE. SEE DS-100. RECOMMENDED PRACTICES FOR PROTECTION CODE.

**CITY OF CHICAGO DEPARTMENT OF CONSTRUCTION AND PERMITS
GENERAL BUILDING REQUIREMENTS Per Chicago Zoning Ordinance (CZO) and Chicago Building Code (CBC) 2018 Edition**

ITEM	ISSUE	CHAPTER/ARTICLE	Ordinance Requirement	Actual	Requirement	Location/Sheet No.	Agency/ Test No.	REMARKS
ZONING REQUIREMENTS								
1.01	Zoning District	CHAPTER 17-1-600	N/A		N/A	N/A	N/A	
1.02	Area Ratio	N/A	N/A		N/A	N/A	N/A	
1.03	Maximum Floor Area Ratio	N/A	N/A		N/A	N/A	N/A	
1.04	Total Building Area	N/A	N/A		N/A	N/A	N/A	
1.05	Building Height - No. of Floors	N/A	N/A		N/A	N/A	N/A	
1.06	Minimum Yards	N/A	N/A		N/A	N/A	N/A	
1.07	Grade Elevation (CGD)	N/A	N/A		N/A	N/A	N/A	
1.08	Off Street Loading	CHAPTER 17-10-101	N/A		N/A	N/A	N/A	
1.09	Off Street Parking	CHAPTER 17-10-207	N/A		N/A	N/A	N/A	
1.10	Landscaping	CHAPTER 17-1-0660	N/A		N/A	N/A	N/A	
BUILDING REQUIREMENTS								
2.01	Occupancy Classification (b)	3 (13-56) page 116	N/A		N/A	N/A	N/A	
2.02	Height and Area Limitations	5 (13-46) page 323	N/A		N/A	N/A	N/A	
2.03	Excessions to Area Limitations	5 (13-46) page 323	N/A		N/A	N/A	N/A	
2.04	Height of Buildings	5 (13-46) page 323	N/A		N/A	N/A	N/A	
2.05	Types of Construction	5 (13-56) page 118	N/A		N/A	N/A	N/A	
2.06	Mixed Occupancy Separations	6 (13-60-100) page 330	N/A		N/A	N/A	N/A	
2.07	Reinforcing of Fire Resistance	6 (13-60-100) page 330	N/A		N/A	N/A	N/A	
2.08	Exterior Nonbearing Walls	Table 6(13-60-100)	N/A		N/A	N/A	N/A	
2.09	Interior Bearing Walls	Table 6(13-60-100)	N/A		N/A	N/A	N/A	
2.10	Interior Nonbearing Walls	Table 6(13-60-100)	N/A		N/A	N/A	N/A	
2.11	Columns Supporting Roofs Only	Table 6(13-60-100)	N/A		N/A	N/A	N/A	
2.12	Beams Supporting Roofs Only	Table 6(13-60-100)	N/A		N/A	N/A	N/A	
2.13	Floor Construction	Table 6(13-60-100)	N/A		N/A	N/A	N/A	
2.14	Roof Construction	Table 6(13-60-100)	N/A		N/A	N/A	N/A	
2.15	Elevator Framing	6(13-60-130) page 331	N/A		N/A	N/A	N/A	
2.16	Mezzanine Floors	6(13-60-100) page 332	N/A		N/A	N/A	N/A	
2.17	Basement Construction	6(13-60-170) page 332	N/A		N/A	N/A	N/A	
2.18	Driveways and Loading Spaces	6(13-60-210) page 332	N/A		N/A	N/A	N/A	
2.19	Fire - Resistive Requirements	7(15-8-010) page 335	N/A		N/A	N/A	N/A	
2.20	a) Fire Walls - Construction	7(15-8-010) page 335	N/A		N/A	N/A	N/A	
2.21	b) Parapets	7(15-8-100) page 336	N/A		N/A	N/A	N/A	
2.22	c) Stairway Enclosures	7(15-8-140) page 337	N/A		N/A	N/A	N/A	
2.23	d) Elevator Enclosures	7(15-8-150) page 337	N/A		N/A	N/A	N/A	
2.24	e) Enclosures of Heating Rooms	7(15-8-190) page 338	N/A		N/A	N/A	N/A	
2.25	f) Enclosures of Wells & Chutes	7(15-8-170) page 338	N/A		N/A	N/A	N/A	
2.26	g) Other Enclosures	7(15-8-240) page 339	N/A		N/A	N/A	N/A	
2.27	h) Interior Wall and Ceiling Finishes	7(15-8-390) page 341	N/A		N/A	N/A	N/A	
2.28	i) Storage Rooms over 100sqft	7(15-8-240) page 339	N/A		N/A	N/A	N/A	
2.29	Construction	7(15-12) page 348	N/A		N/A	N/A	N/A	
2.30	Recognized Engineering Practice	7(15-12-060)	N/A		N/A	N/A	N/A	
2.31	Recognized Agencies		N/A		N/A	N/A	N/A	
2.32	Fire Protection Equipment	9(15-16) page 361	N/A		N/A	N/A	N/A	
2.33	a) Sprinkler Systems	9(15-16-010) page 362	N/A		N/A	N/A	N/A	
2.34	b) Special Requirements	9(15-16-030) page 362	N/A		N/A	N/A	N/A	
EXIT REQUIREMENTS								
3.01	Types of Exits	10(13-160-040) page 388	N/A		N/A	N/A	N/A	
3.02	Minimum Number of Exits	10(13-160-050) page 388	N/A		N/A	N/A	N/A	
3.03	Travel Distance to Exits	10(13-160-110) page 389	N/A		N/A	N/A	N/A	
3.04	a) Accesses Permitted	10(13-160-150) page 390	N/A		N/A	N/A	N/A	
3.05	b) Dead End Corridor	10(13-160-160) page 390	N/A		N/A	N/A	N/A	
3.06	c) Capacity of Exits	10(13-160-210) page 390	N/A		N/A	N/A	N/A	
3.07	Minimum Width of Exits	10(13-160-220) page 391	N/A		N/A	N/A	N/A	
3.08	Swing of Exit Doors	10(13-160-250) page 391	N/A		N/A	N/A	N/A	
3.09	Hardware	10(13-160-260) page 392	N/A		N/A	N/A	N/A	
3.10	Revolving Doors	10(13-160-270) page 393	N/A		N/A	N/A	N/A	
3.11	Landings	10(13-160-310) page 394	N/A		N/A	N/A	N/A	
3.12	Horizontal	10(13-160-320) page 394	N/A		N/A	N/A	N/A	
3.13	Construction	10(13-160-330) page 394	N/A		N/A	N/A	N/A	
3.14	Enclosures	7(15-8-140) page 337	N/A		N/A	N/A	N/A	

T-Mobile
T. MOBILE
1400 OPIUS PLAZA
DOWNERS GROVE, IL 60515
PHONE: (773) 444-5400

LCC
TELECOM SERVICES
LCC TELECOM SERVICES, LLC
10700 W. HOGANS RD, SUITE 240
MORTON, IL 60450
PHONE: (847) 395-4233

ONCORIDIA WIRELESS, INC.
CONCORDIA, ILL
A PROFESSIONAL DESIGN FIRM
LICENSE # 002-0119-9-0
981 PONDY ROAD
CAROL STREAM, IL 60188
MAIN: (847) 981-0801

DRAWN BY: J.C.
CHECKED BY: GMS
DATE: 11/11/11

THADDEUS A. PACYNAK
8109
LICENSED ARCHITECT
STATE OF ILLINOIS

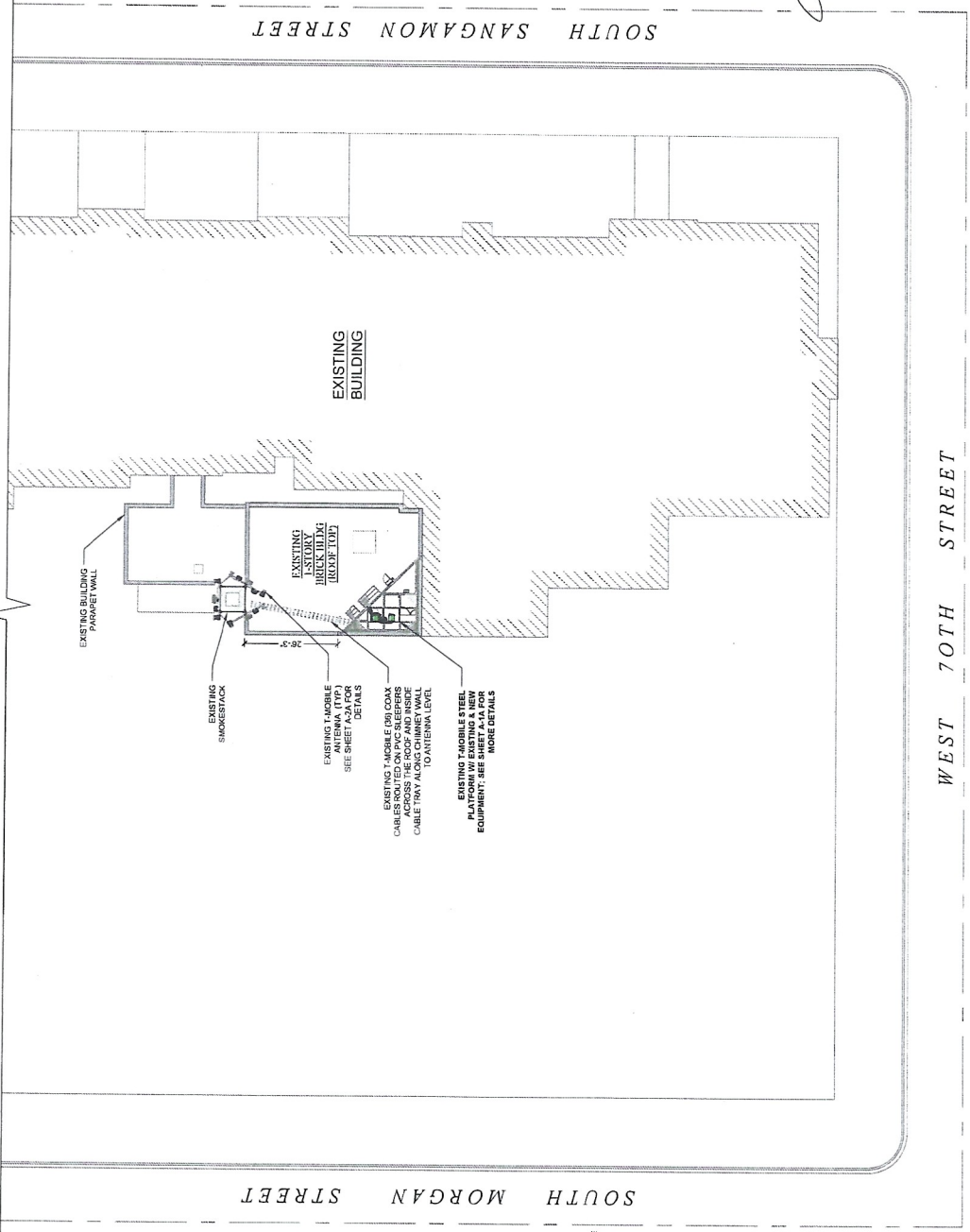
CH42418A
CPS WENTWORTH SCHOOL
6950 S SANGAMON STREET
CHICAGO, IL 60621

CODE MATRIX SCHEDULE

T-2

LEGEND & SYMBOLS

- UTILITY POLE
- SIGN
- TELE PEDESTAL
- FIRE HYDRANT
- LIGHT STANDARD
- INLET
- CATCH-BASH
- MANHOLE
- TRAFFIC SIGNAL
- ROW MARKER
- IRON PIPE SET
- IRON PIPE FOUND
- BUFFALO BOX
- VALVE BOX
- HORIZONTAL CONTROL POINT
- HANDICAPPED PARKING SPACE
- DECIDUOUS TREE W/SHZ
- CONIFEROUS TREE W/SHZ
- BRUSH
- TREE LINE
- CONTOUR W/ ELEVATION
- EXISTING CURB/SPALL
- CHAIN LINK FENCE
- IRON FENCE
- WOOD FENCE
- OVERHEAD WIRES
- LOT LINE
- PROPERTY LINE
- LEASE AREA LINE
- UTILITY EASEMENT LINE
- CENTER LINE
- UNDERGROUND ELECTRIC LINE
- UNDERGROUND GAS LINE
- UNDERGROUND FIBER LINE
- UNDERGROUND TELEPHONE LINE
- UNDERGROUND STORMWATER SEWER LINE
- UNDERGROUND WATER LINE
- UNDERGROUND COMMUNICATIONS/STORING LINE
- CONCRETE
- ASPHALT
- GRAVEL
- CULTIVATED FIELD
- GRASS AREA
- ICE BRIDGE
- STEEL PLATFORM



T-Mobile
 T-MOBILE
 1400 OPLUS PLACE
 DOWNERS GROVE, IL 60515
 PHONE: (773) 444-5600

LCC
TELECOM SERVICES
 LCC TELECOM SERVICES, LLC
 1000 W. WASHINGTON RD. SUITE 240
 ROSEMONT, IL 60010
 MAIN: (847) 390-4833

CONCORDIA WIRELESS, INC.
 CONCORDIA, LTD.
 361 RANDY ROAD
 UNIT 101
 CAROL STREAM, IL 60188
 MAIN: (847) 381-0601

DRAWN BY: JC
 CHECKED BY: GMS
 DESIGNED BY: GMS

THAIDEUS A. PACYNAK
 8109 S. STATE ST.
 CHICAGO, IL 60619
 LICENSED ARCHITECT

CH2418A
 CPS WENTWORTH SCHOOL
 6950 S SANGAMON STREET
 CHICAGO, IL 60621

SITE PLAN

A-1

1 SITE PLAN
 SCALE: 1/8" = 1'-0" (1/16" = 2'-0" IF 11 X 17 SHEET SIZE)

NOTE: WANT ALL CABLE EQUIPMENT, ANTENNAS, FRAMES, CABLE TRAYS AND CONDUITS MOUNTED FROM GROUND TO MATCH THE ADJACENT MASONRY

10-31-18
A-2
D.L.R.E

TOP OF CHIMNEY
ELEV. ± 119'-10" (AGL)

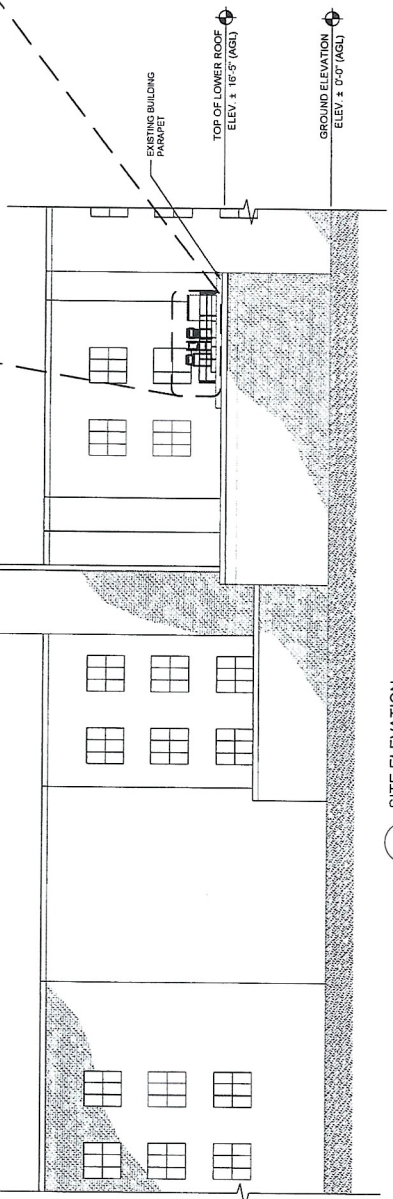
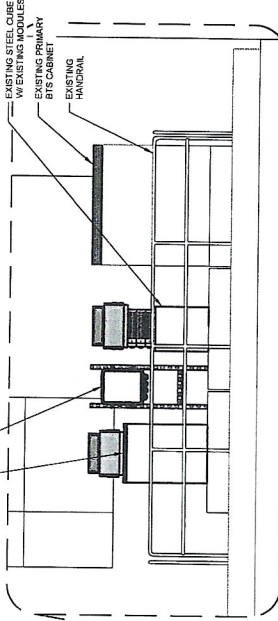
C.L. OF EXISTING & NEW T-MOBILE ANTENNAS
ELEV. ± 85'-0" (AGL)

EXISTING T-MOBILE (M) COAX CABLES ROUTED TO ANTENNA LEVEL

EXISTING SWAGSTACK
SEE SHEET A-2A FOR REQUIRED REPAIRS.
EXISTING TENSION BANDS (1" x 6" x 8")

11-12-18
A-2
D.L.R.E

(1) NEW T-MOBILE COVP TO BE MOUNTED ON EXISTING MASONRY UNITS FRAME
(1) EXISTING SITE SUPPORT CABINET MOUNTED ON EXISTING PLINTH



1 SITE ELEVATION
SCALE: 3/32" = 1'-0" (3/32" = 2'-0" IF 11X17 SHEET SIZE)

T-Mobile
T-MOBILE
1400 OPUS PLACE
DOWNERS GROVE, IL 60615
PHONE: (773) 444-5400

LCC
LCC TELECOM SERVICES, LLC
LCC TELECOM SERVICES, LLC
SUITE 240
ROSEMONT, IL 60016
MAIN: (847) 380-4833

CONCORDIA, LTD
CONCORDIA, LTD
CONCORDIA, LTD
LICENSE # 3333-011 D.B.A.
CONCORDIA WIRELESS, INC.
381 RANDY ROAD
UNIT 101
CAROL STREAM, IL 60188
MAIN: (847) 981-0901

DRAWN BY: JC
CHECKED BY: GMS
CHECKED BY: GMS

THADDEUS PACYNAK
8109
ARCHITECT
LICENSED ARCHITECT
STATE OF ILLINOIS

CH42418A
CPS WENTWORTH SCHOOL
6950 S SANGAMON STREET
CHICAGO, IL 60621

SITE ELEVATION

10-31-18
A-2
D.L.R.E

CHIMNEY INSPECTION REPORT REQUIREMENTS
BY BEDNASH CONSULTING, INC
OCTOBER 18, 2018 REPORT

Conclusions / Required Maintenance Actions

Since the upper levels of cellular antenna were removed, the chimney possessed no lightning protection. When the installer of the upper level of antennas secured the support components to the chimney, they removed the four air terminals and disconnected the two downleads from the upper encircling cable (Photos 1 - 8). It is assumed the antennas were properly grounded and served as the lightning protection system for the chimney. When the antennas and majority of support components were removed, the original lightning protection system was not reinstalled and reconnected. Beyond the missing LPS system, the interior condition of mortar joints throughout the upper 40' was poor and cracks have reopened along the original step irons. The level of deterioration throughout the upper elevations may warrant repairs prior to installing additional antennas.

Required maintenance items are listed below.

1. **Reinstall the original lightning protection system components at the top.** Four new air terminals (lightning rods) should be reinstalled and connected to the upper encircling cable. The two downlead cables should also be reconnected to the upper encircling cable. All cables in the upper elevations should be secured to the masonry wall with new pinch anchors.
2. **Replace the cement water table at the 117' level.** The cracked and partially dislodged cement along the shelf should be completely removed and replaced.

NOTE
 GC TO PERFORM THE REPAIRS MENTIONED ABOVE
 BEFORE INSTALLATION OF NEW T-MOBILE ANTENNAS
 AND EQUIPMENT ON THE EXISTING CHIMNEY.

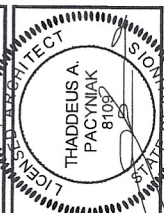
A11-12-18
 E.YRE

T-Mobile
 T-MOBILE
 1400 OPUS PLACE
 DOWNERS GROVE, IL 60515
 PHONE: (773) 444-5400

LCC
TELECOM SERVICES
 LCC TELECOM SERVICES, LLC
 10700 W. HIGGINS RD, SUITE 240
 ROSEMONT, IL 60018
 ILLINOIS (630) 953-9653

CONCORDIA LTD
 A PROFESSIONAL DESIGN FIRM
 LICENSE # 332291, D.B.A.
CONCORDIA WIRELESS, INC
 381 RANDY ROAD
 UNIT 101
 ROCKFORD, ILL. 60188
 ILLINOIS (847) 984-0881

DRAWN BY: JC CHECKED BY: GMS
 CHECKED BY: GMS



CH42418A
 CPS WENTWORTH SCHOOL
 6950 S SANGAMON STREET
 CHICAGO, IL 60621

CHIMNEY INSPECTION REPORT
 RECOMMENDATIONS
 BY BEDNASH CONSULTING, INC

A-2A A11-12-18
 E.YRE