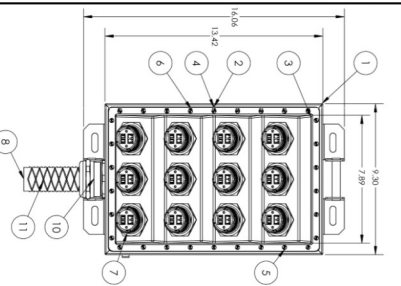


TOWER OVP DETAIL

SCALE: NONE

1

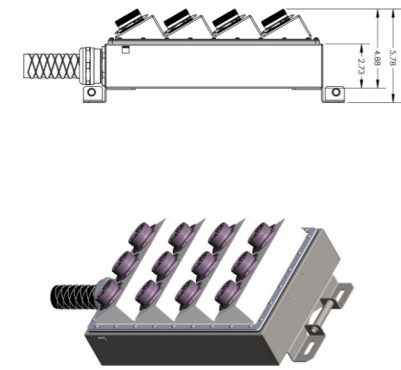


ITEM NO.	PART NUMBER	DESCRIPTION	AC-0078-H-CAP
1	AC-0078-H-CAP	HYBRID CABLE BREAKOUT BOX	1
2	AC-0078-H-CAP	HYBRID CABLE BREAKOUT BOX	1
3	AC-0078-H-CAP	HYBRID CABLE BREAKOUT BOX	1
4	AC-0078-H-CAP	HYBRID CABLE BREAKOUT BOX	1
5	AC-0078-H-CAP	HYBRID CABLE BREAKOUT BOX	1
6	AC-0078-H-CAP	HYBRID CABLE BREAKOUT BOX	1
7	AC-0078-H-CAP	HYBRID CABLE BREAKOUT BOX	1
8	AC-0078-H-CAP	HYBRID CABLE BREAKOUT BOX	1
9	AC-0078-H-CAP	HYBRID CABLE BREAKOUT BOX	1
10	AC-0078-H-CAP	HYBRID CABLE BREAKOUT BOX	1
11	AC-0078-H-CAP	HYBRID CABLE BREAKOUT BOX	1

HYBRID CABLE H-CAP BREAKOUT BOX

SCALE: NONE

2



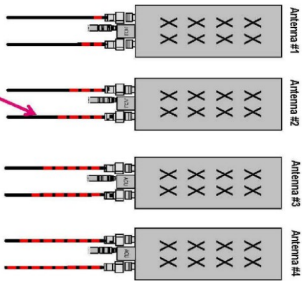
## Coax Color Coding

Antennas will be labeled (back of antenna view) Right to left 1 - X ports

Coax/Jumper lines will be identified by sector color and by number of bands around the coax/jumper

Sector A	Red
Sector B	Green
Sector C	Blue
Sector D	Yellow
Sector E	White
Sector F	Purple
LMU	Brown + Sector Color Bands (1,2)
Fiber ID	Gray
Unused Coax	Pink
PWE T-1's + GPS	Orange
Downlink cable	ID w/ Label Marker

Front of the Antenna

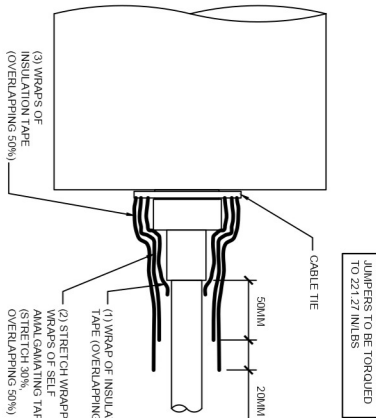


Example - Coax with four bands of red tape will represent Alpha sector and the 4th port of antenna.

COAX COLOR CODING

SCALE: NONE

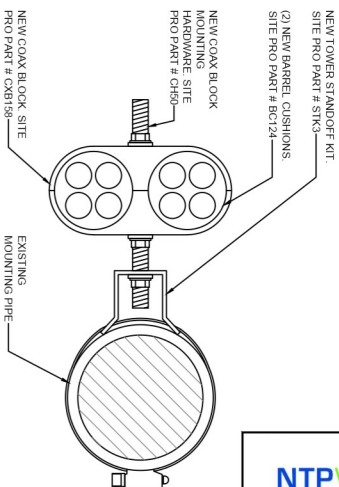
3



RF JUMPER CONNECTION DETAIL

SCALE: NONE

4



RF JUMPER MOUNTING DETAIL

SCALE: NONE

5

NTPWIRELESS  
EVERY SITE, EVERY DAY

T-Mobile

WT Group  
Engineering • Design • Consulting

WT GROUP  
Engineering with Precision, Pace and Passion.  
2875 Platinum Avenue (Hoffman Estates, IL 60162)  
T: 224.293.6331 F: 224.293.6444  
www.wtgroup.com  
IL License No. 154-007870-0015 Expires 04/30/2021  
© Copyright 2021 THE WT GROUP, LLC

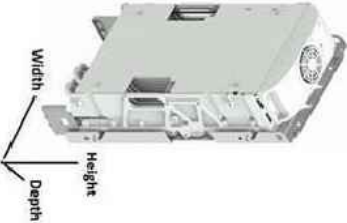
CH71564A  
CPS PALMER ELEMENTARY  
6051 N. KENNETH AVE.  
CHICAGO, IL 60630

EXPIRES 11/02/21 SIGNED 02/15/21  
REVISIONS  
REV. 10/02/21 DATE 10/02/21 BY  
A. FOR CLIENT REVIEW 01/10/21 NLO  
B. FINAL 02/15/21 JTB  
C. REVISION

AQUATIC \ DESIGN & PROGRAM MANAGEMENT  
CIVIL \ TELECOMMUNICATION \ MECHANICAL  
PLUMBING \ ELECTRICAL \ LAND SURVEYING  
ACCESSIBILITY CONSULTING \ STRUCTURAL

A-3  
EQUIPMENT  
SPECIFICATIONS  
CHECK, JMR  
DRAWN, GT  
JOB, 20020377

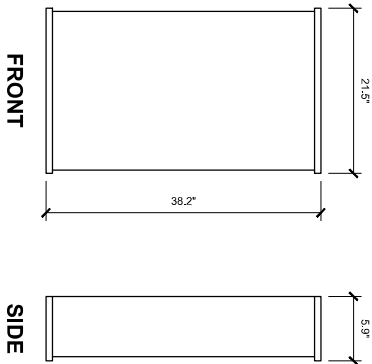
Instantaneous BW (DL/UL)	65MHz on Band 35, 80MHz on Band 66
Supported Modulation schemes	up to 64QAM (DL) and up to 256QAM (DL)
Supported bandwidths	LTE 1.4, 3.5, 10, 15, 20 MHz
No. of ports	41Kbps and 40 W for Band 66
Output Power	(Total Power is 480W)
DC connector	Terminal block
Optical Fiber connector	2 x 9 RGPP CPRI RCT IP seal
RF Connector	4.3-10+
AISG	AISG on all ports, DC on ANTI and ANTI
Dimensions	27.3 x 12.1 x 5.2
(H x W x D) in	
Weight lbs	10.5 without cover
HW/SV Availability	Available now - SRAN19A
5G NR Support	YES
NB-IoT Support	YES (on band guardband, standalone)



### AHFIG DETAIL

SCALE: NONE

1

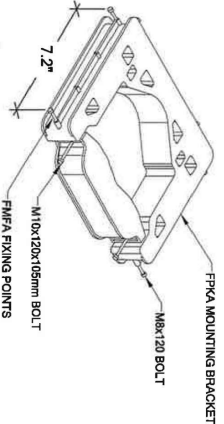


**NOKIA AEHC**  
SIZE (L x W x D): 38.2" x 21.5" x 5.9"  
WEIGHT (W/O MOUNTING KIT): 106.0 LBS

### ANTENNA DETAIL

SCALE: NONE

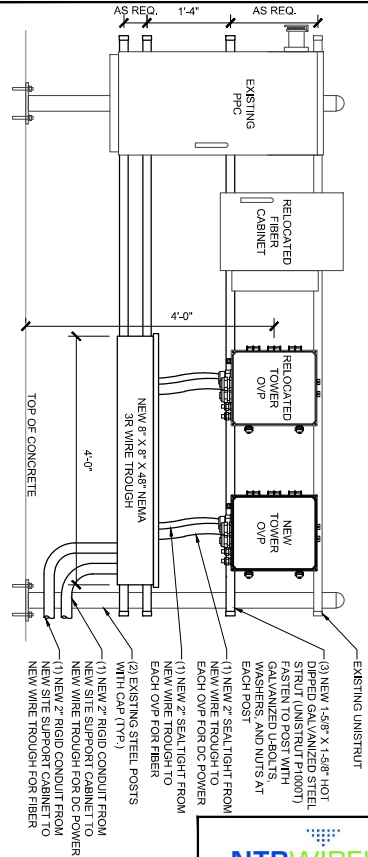
2



### FPKA BRACKET DETAIL

SCALE: NONE

3



### OVP FRAME DETAIL

SCALE: NONE

4

AQUATIC \ DESIGN & PROGRAM MANAGEMENT  
CIVIL \ TELECOMMUNICATION \ MECHANICAL  
PLUMBING \ ELECTRICAL \ LAND SURVEYING  
ACCESSIBILITY CONSULTING \ STRUCTURAL



REVISIONS	DATE	BY
1. NEW REQUIRED FOR	10/29/20	GT
2. FINAL	01/12/21	KLD
3. REVISION	02/15/21	JTB

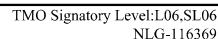
EXPIRES: 11/20/21 SIGNED: 02/15/21



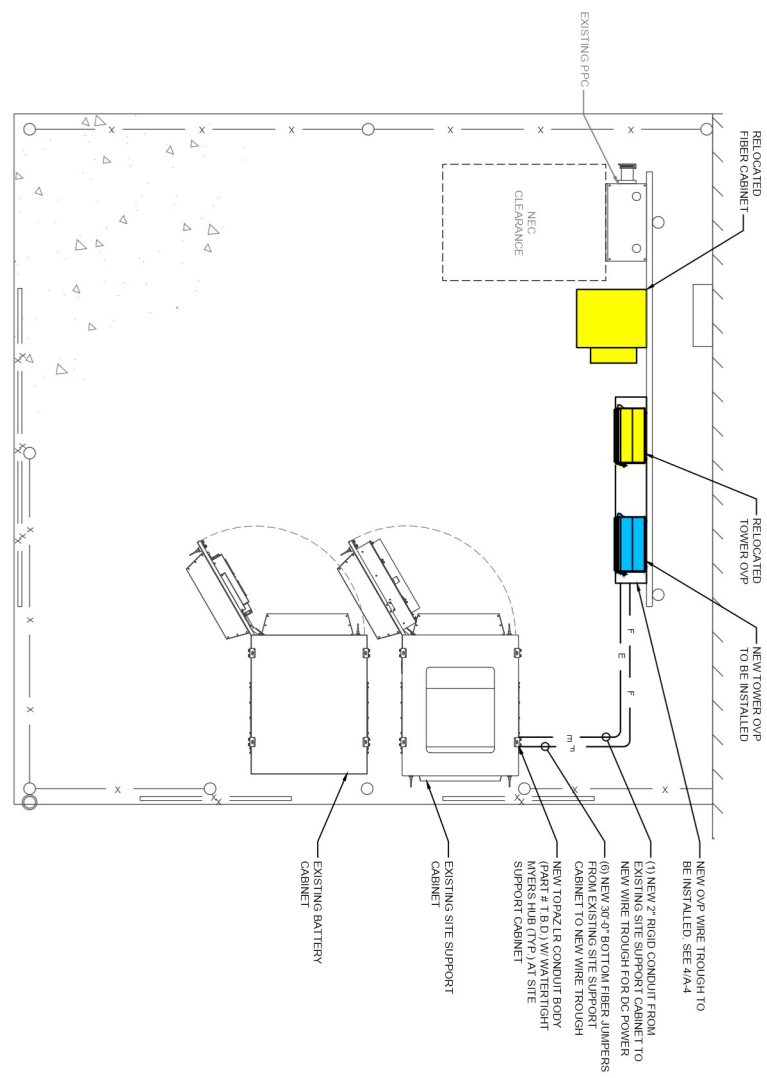
**WT GROUP**  
Engineering with Precision, Pace and Passion.  
2875 Palum Avenue | Hoffman Estates, IL 60182  
T: 224.293.6333 | F: 224.293.6444  
info@wtgroup.com  
1. License No. 18-207570-0010, Expiry: 04/30/2021  
© copyright 2021 The WT Group, LLC

CH71564A  
CPS PALMER ELEMENTARY  
5051 N. KENNETH AVE.  
CHICAGO, IL 60630





- PPC NOTES
- (1) 1/2" RIGID CONDUIT FROM PPC TO SSC
  - (2) RUNS OF Belden 27916A 18 AWG 2
  - CONDUCTOR TYPE TO CABLE .600V WIRE
  - WIRE TO NORMALLY CLOSED RELAY FOR LOOP
  - GENERATION RUN



**LEGEND**

F — FIBER LINE

E — ELECTRIC LINE

**UTILITY PLAN**

SCALE: 3/8" = 1'-0"

1



AQUATIC \ DESIGN & PROGRAM MANAGEMENT  
CIVIL \ TELECOMMUNICATION \ MECHANICAL  
PLUMBING \ ELECTRICAL \ LAND SURVEYING  
ACCESSIBILITY CONSULTING \ STRUCTURAL

CHECK AND  
DESIGN  
JOB: 20020377

**E-1**

UTILITY PLAN

**NTPWIRELESS**  
EVERY SITE, EVERY DAY

**T-Mobile**

**WT Group**  
Engineering • Design • Consulting

CH71564A  
CPS PALMER ELEMENTARY  
6051 N. KENNETH AVE.  
CHICAGO, IL 60630

**WT GROUP**  
Engineering with Precision, Pace and Passion.

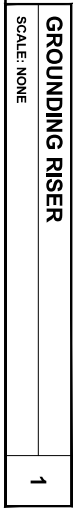
2675 Platan Avenue (Hoffman Estates, IL 60162)  
T: 224.293.6331 F: 224.293.6444  
info@wtgroup.com

IL License No. 164-027676-0016 Expires 04/30/2021  
© Copyright 2021 THE WT GROUP, LLC

STATE OF ILLINOIS  
JERRY S. BUTOWSKI  
Professional Engineer  
No. 081-005347

EXPIRES 11/30/21 SIGNED 02/15/21

REVISIONS	
REV.	DATE
A	FOR CLIENT REVIEW 10/29/20
B	FINAL 01/11/21 NLO
A	REVISION 02/15/21 JTB

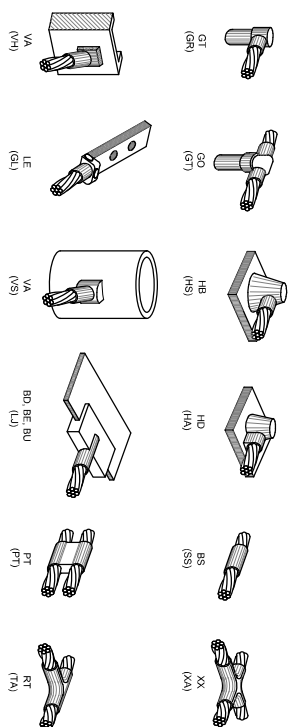






## SCALE: NONE

NOTE: THE FOLLOWING SYMBOLS SHOWN ARE LARGER ULTRAWELD EXOTHERMIC CONNECTIONS WITH PART NUMBERS BELOW. THESE CONNECTIONS MAY BE CROSS-REFERENCED WITH CADWELD CONNECTIONS WHICH ARE SHOWN IN PARENTHESIS



## SCALE: NONE

2

### KEY NOTES:



EACH GROUND CONDUCTOR TERMINATING ON ANY GROUND BAR SHALL HAVE AN IDENTIFICATION TAG ATTACHED AT EACH END THAT WILL IDENTIFY ITS ORIGIN AND DESTINATION

## SECTION "P" - SURGE PRODUCERS

- COLLECTOR GROUND BAR
- GENERATOR FRAMEWORK (IF AVAILABLE)
- TELCO GROUND BAR
- COMMERCIAL POWER COMMON NEUTRAL/GROUND
- FIBER GROUND BAR
- EQUIPMENT ROOM COLLECTOR GROUND BAR
- HVAC
- RECTIFIER FRAMES

## SECTION "A" - SURGE ABSORBERS

- EXTERNAL EARTH GROUND FIELD (BURIED GROUND RING)
- METALLIC COLD WATER PIPE (IF AVAILABLE)
- BUILDING STEEL (IF AVAILABLE)
- AC POWER

**SECTION "N" - NON-ISOLATED GROUND ZONE EQUIPMENT**

- CABLE TRAY SYSTEM
- EQUIPMENT FRAMES
- BATTERY RACKS
- DC POWER

- SECTION "I" - ISOLATED GROUND ZONE
- ISOLATED EQUIPMENT FRAMES

- ISOLATED GROUND BAR - IGB

**SCALE: NONE**

ω



**T-Mobile**

**WT GROUP**  
Engineering with Precision, Pace and Passion.  
2675 Pratum Avenue | Hoffman Estates, IL 60192  
T: 224.293.6333 | F: 224.293.6444  
wtengineering.com

CH71564A  
CPS PALMER ELEMENTARY  
5051 N. KENNETH AVE.  
CHICAGO, IL 60630

EXPIRES: 11/30/21	SIGNED: 02/15/21
-------------------	------------------

REV. ISSUED FOR

0	FINAL	01/11/21	KLO
1	REVISION	02/15/21	ITB

---

1000

MENT  
ICAL  
YING  
URAL



NAG  
ECH  
SUR  
TRUC



PRO  
ICAT  
CAL  
LTIN

▶

CHECK: JKI

IGN  
MMU  
LECT  
CONS

100-20020077

AND  
ELE  
G  
BILIT

GR-2

100

TMO Signatory Level:L06,SL06  
NLG-116369

**EXHIBIT "B"****PAYMENTS**

<b>TERM</b>	<b>ANNUAL LICENSE PAYMENTS</b>
<p>1</p> <p>June 1, 2026 – May 31, 2027  June 1, 2027 – May 31, 2028  June 1, 2028 – May 31, 2029  June 1, 2029 – May 31, 2030  June 1, 2030 – May 31, 2031</p>	<p>\$60,000.00  \$61,800.00  \$63,654.00  \$65,564.00  \$67,531.00</p>
<p>2</p> <p>June 1, 2031 – May 31, 2032  June 1, 2032 – May 31, 2033  June 1, 2033 – May 31, 2034  June 1, 2034 – May 31, 2035  June 1, 2035 – May 31, 2036</p>	<p>\$69,557.00  \$71,644.00  \$73,793.00  \$76,007.00  \$78,287.00</p>
<p>3</p> <p>June 1, 2036 – May 31, 2037  June 1, 2037 – May 31, 2038  June 1, 2038 – May 31, 2039  June 1, 2039 – May 31, 2040  June 1, 2040 – May 31, 2041</p>	<p>\$80,636.00  \$83,055.00  \$85,547.00  \$88,113.00  \$90,756.00</p>
<p>4</p> <p>June 1, 2041 – May 31, 2042  June 1, 2042 – May 31, 2043  June 1, 2043 – May 31, 2044  June 1, 2044 – May 31, 2045  June 1, 2045 – May 31, 2046</p>	<p>\$93,479.00  \$96,283.00  \$99,171.00  \$102,146.00  \$105,210.00</p>